

# C-AXIS TECHNOLOGY SHEET

## Nano Part Machining

### World Class Facilities

C-Axis operates manufacturing facilities in Minnesota and Puerto Rico!

### Contract Manufacturing

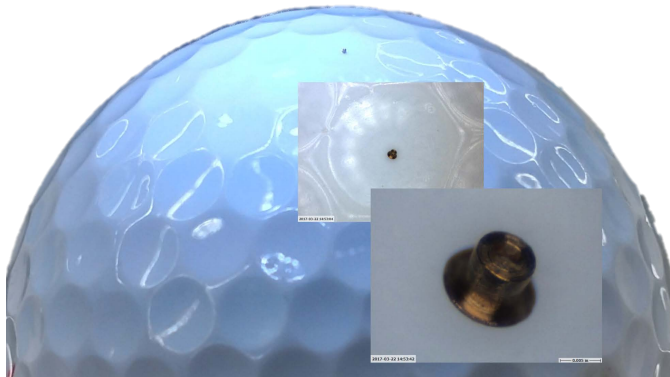
Managing the complete bill of material by purchasing, manufacturing, metal finishing, and assembly.

### ISO Quality Systems

C-Axis is certified to ISO 9001 and ISO 13485 at both facilities! FDA registrar-ed at the PR facility.

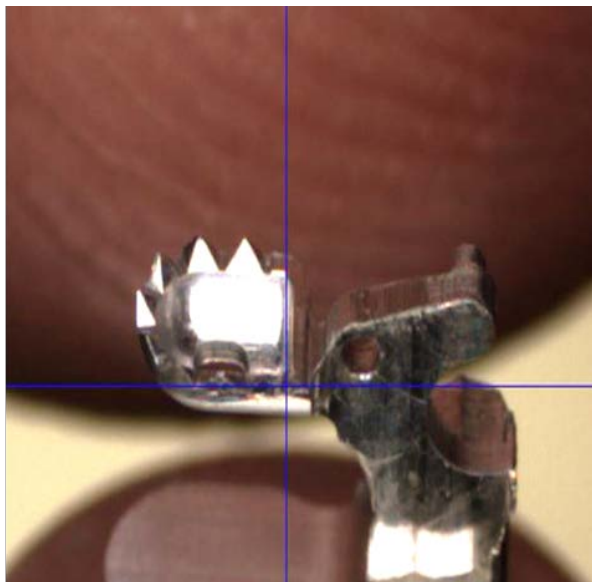


Let us show you what small is!

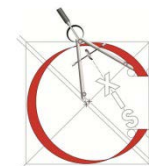


### Capabilities!

- Max. bar capacity mm 4
- Standard workpiece length with fixed guide bush mm 28
- Spindle rotation speed t/min 0-16000
- Spindle power (nominal/max) kW 1/2
- Torque (nominal/max) Nm 0.65/2
- C1 axis
- Polygon operation (and gear hobbing) function programming
- Thread milling device option
- Gear hobbing device option
- Radial drills option
- Adjustment of S4 counter spindle end of clamping
- Pneumatic ejection of workpiece + air/oil cleaning of collet
- Automatic centralized lubrication cycle



C-AXIS.COM



**C-AXIS INC**  
CONTRACT MANUFACTURING